

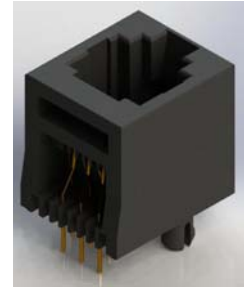
J24 SERIES



MODULAR JACK CONNECTORS: SINGLE PORT RJ11 WITH OPTIONAL MBB, VERTICAL PCB MOUNT, NON-SHIELDED, 6.35MM FOOTPRINT

Features:

- Top performance for high speed networking, voice and data applications
- Meet FCC PART 68, Subpart F requirements
- Applications: Telecommunications, Broadcast, Data Products
- Make Before Break (MBB) option available.
- RoHS Compliant



Specifications:

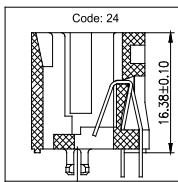
Housing Material	PBT
Contact Material	Phosphor Bronze
Contact Plating	Gold Plating on contact area and Tin Plating on tails with Nickel underplating all over
Current Rating	1.5 amps @25°C
Voltage Rating	125 V AC
Contact Resistance	20 milliohms maximum
Dielectric Withstanding Voltage	1000 V AC
Insulation Resistance	500 megaohms minimum
Durability	750 cycles minimum
Operating Temperature	-40°C to +85°C
Wave Soldering Process	260°C ± 5°C, 5~10 Seconds

Ordering Code:

EXAMPLE PART NUMBER: J24016621P00031

SERIES: RJ MODULAR JACK

HOUSING TYPE: 24-



NO. OF PORTS: 01 - 1 PORT

NO. OF CONTACTS PER PORT: 66 - 6P6C

CONTACT PLATING:
 2 - GOLD FLASH
 3 - 15 MICROINCHES OF GOLD
 6 - 30 MICROINCHES OF GOLD
 9 - 50 MICROINCHES OF GOLD

CONTACT TAIL TYPE: 1 - VERTICAL PCB

HOUSING MATERIAL:
 P - PBT
 N - NYLON

MOUNTING OPTIONS:
 1 - BOARD LOCKS

PORT TYPE:
 3 - SINGLE ROW (VERTICAL)
 7 - SINGLE ROW (VERTICAL) -MBB

SHIELDING:
 0 - NO SHIELD

RIGHT LED COLOR:
 0 - NO LED

LEFT LED COLOR:
 0 - NO LED