

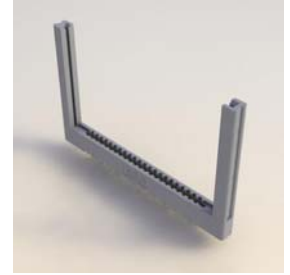
# 322 SERIES



## Card Edge Connectors 0.156" (3.96mm) Pitch

### Features:

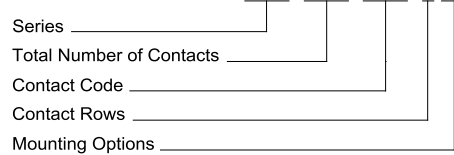
- 0.156" (3.96mm) contact spacing x 0.200" (5.08mm) row spacing
- Accepts 0.062" (1.57mm) nominal thickness P.C. board
- Low profile insulator body, 0.473" (12.01mm) with card guides
- Contact termination options include P.C. tail, wire hole, wire wrap, 90 degree and extender board bends
- Single or dual row configurations
- Variety of mounting options
- Accepts between contact and in-contact polarizing keys
- RoHS Compliant



### Specifications:

Insulator Material	Grey polycarbonate, Glass reinforced
Contact Material	Copper Alloy
Contact Plating	Gold plating on mating area, Tin plating on tails with nickel underplating all over
Current Rating	5 amps
Contact Resistance	10 milliohms maximum
Dielectric Withstanding Voltage	1800 V AC rms at sea level between adjacent contacts
Insulation Resistance	5000 megaohms minimum
Operating Temperature	-40°C to +105°C
Insertion Force	16 oz (4.45 N) maximum per contact pair when tested with .070" (1.78mm) thick gauge
Withdrawal Force	1 oz (0.28 N) minimum per contact pair when tested with .054" (1.37mm) thick gauge

### EXAMPLE PART NUMBER 322-044-500-258



#### Series:

322

#### Total Number of Contacts:

022

044

#### Contact Rows:

1

2

#### Mounting Options:

54

57

58

#### Contact Rows:

Single Row

Dual Row

#### Insulator Material:

Grey Polycarbonate

Grey Polycarbonate

#### Description:

Ø.156" (Ø3.96mm) x .300" (7.62mm) Deep Holes

M3-0.5 Metric Threaded Inserts

#4-40 Unified Threaded Inserts

#### Description:

Single Row

Double Row

#### Contact Code:

505

525

527

531

545

547

558

559

501

521

541

553

554

557

500

520

522

524

540

542

555

556

558

559

560

#### Tail Description:

Wire Hole

P.C. Tail

P.C. Tail

P.C. Tail

Wire Wrap

Wire Wrap

90 DEGREE BEND (CODE 545 CONTACTS)

90 DEGREE BEND (CODE 527 CONTACTS)

Wire Hole

P.C. Tail

Wire Wrap

90 DEGREE BEND (CODE 521 CONTACTS)

90 DEGREE BEND (CODE 501 CONTACTS)

90 DEGREE BEND (CODE 541 CONTACTS)

Wire Hole

P.C. Tail

P.C. Tail

P.C. Tail

Wire Wrap

Wire Wrap

.062 EXTENDER BOARD BEND (CODE 500 CONTACTS)

.062 EXTENDER BOARD BEND (CODE 520 CONTACTS)

90 DEGREE BEND (CODE 522 AND 540 CONTACTS)

90 DEGREE BEND (CODE 522 AND 540 CONTACTS)

.062 EXTENDER BOARD BEND (CODE 522 CONTACTS)

#### Tail Size:

.087 x .013 (2.21 x 0.33)

.046 x .013 (1.17 x 0.33)

.046 x .013 (1.17 x 0.33)

.023 x .013 (0.58 x 0.33)

.046 x .013 (1.17 x 0.33)

.046 x .013 (1.17 x 0.33)

.046 x .013 (1.17 x 0.33)

#### Single Row Contacts - Read Both Sides of Daughter Board

.089 x .014 (2.29 x 0.36)

.046 x .014 (1.17 x 0.36)

.046 x .014 (1.17 x 0.36)

#### Dual Row Contacts - Read Both Sides of Daughter Board

.087 x .013 (2.21 x 0.33)

.046 x .013 (1.17 x 0.33)

.046 x .013 (1.17 x 0.33)

.023 x .013 (0.58 x 0.33)

.046 x .013 (1.17 x 0.33)

.046 x .013 (1.17 x 0.33)

#### Tail Length "G":

.282 (7.16)

.213 (5.41)

.358 (9.09)

.213 (5.41)

.708 (17.98)

.520 (13.21)

.520 (13.21)

.213 (5.41)

.213 (5.41)

.495 (12.57)

.213 (5.41)

.708 (17.98)

.520 (13.21)

.520 (13.21)

.520 (13.21)

.282 (7.16)

.213 (5.41)

.358 (9.09)

.213 (5.41)

.708 (17.98)

.520 (13.21)

# 322 SERIES

Card Edge Connectors 0.156" (3.96mm) Pitch

